

THE T. S. ESTATE AND BUILDINGS,
AT ADYAR, MADRAS

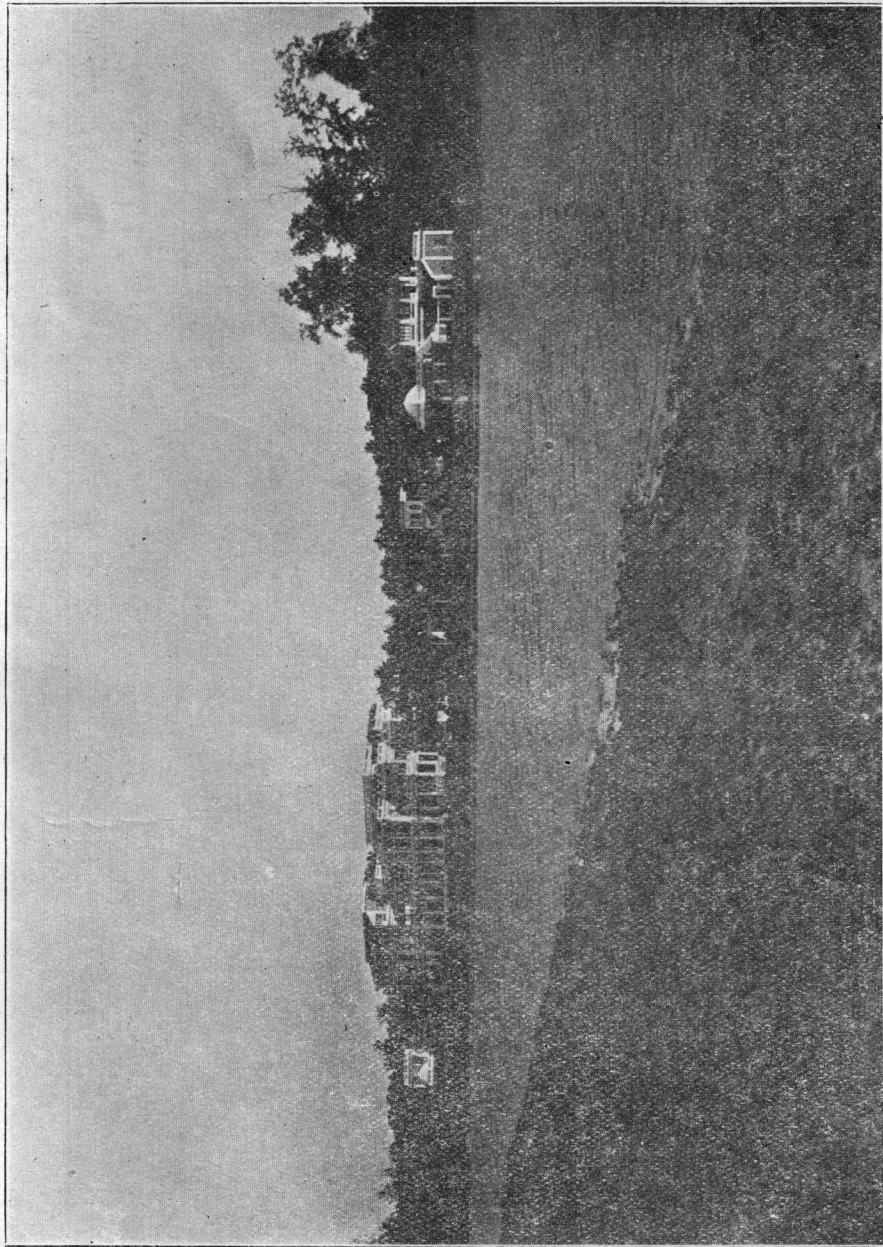


Fig. 223

VIEW OF HEADQUARTERS BUILDINGS, FROM THE WEST

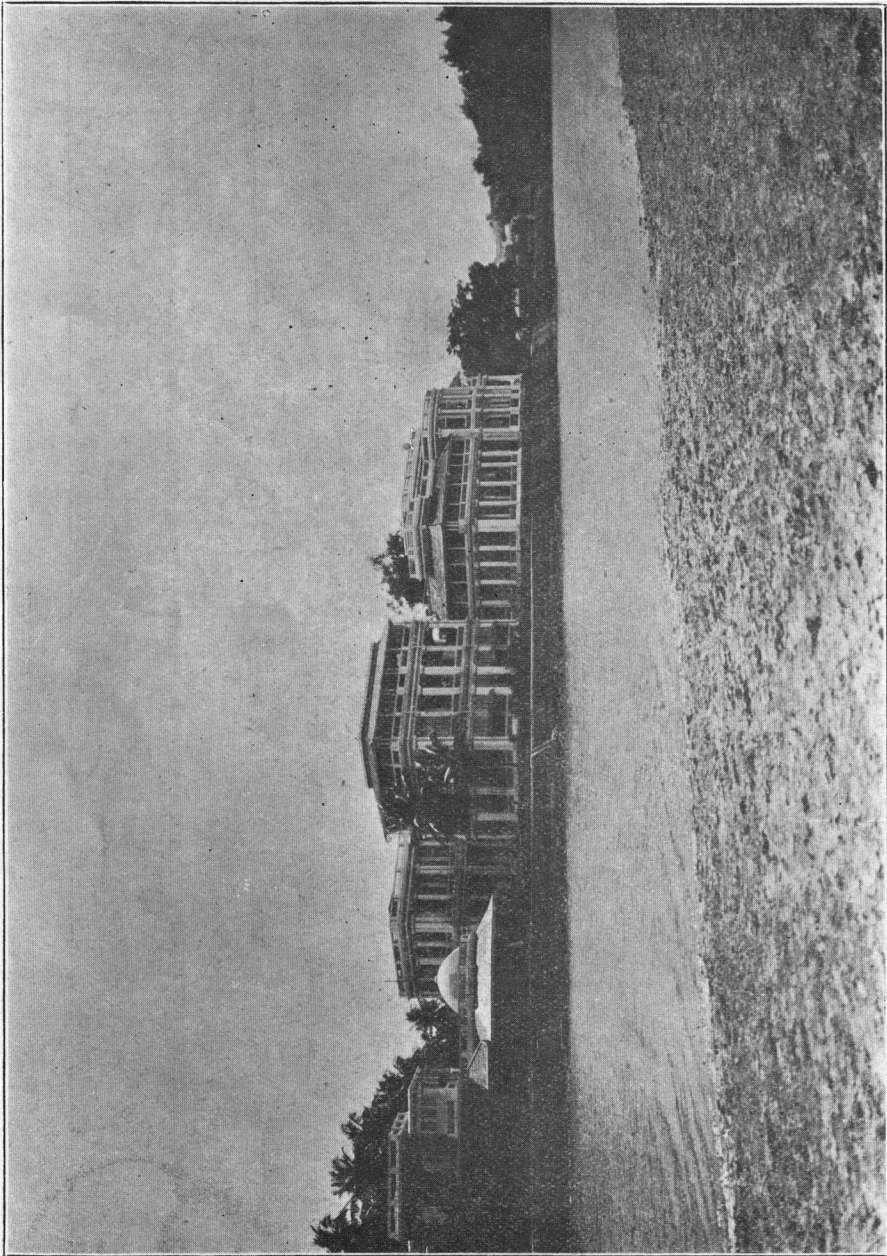


FIG. 224
VIEW OF HEADQUARTERS BUILDINGS, FROM THE EAST

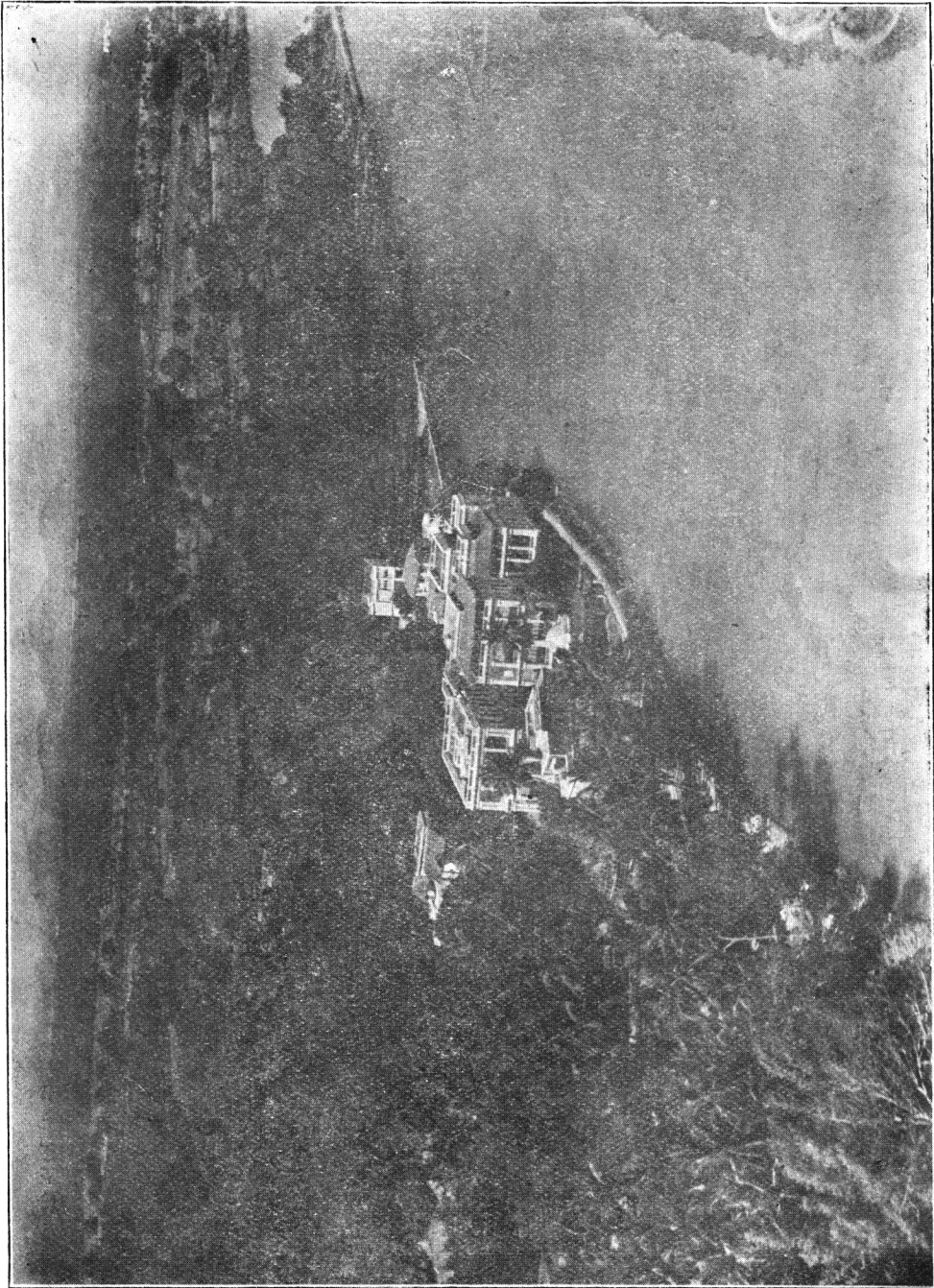


FIG. 225
AEROPLANE VIEW, FROM THE EAST

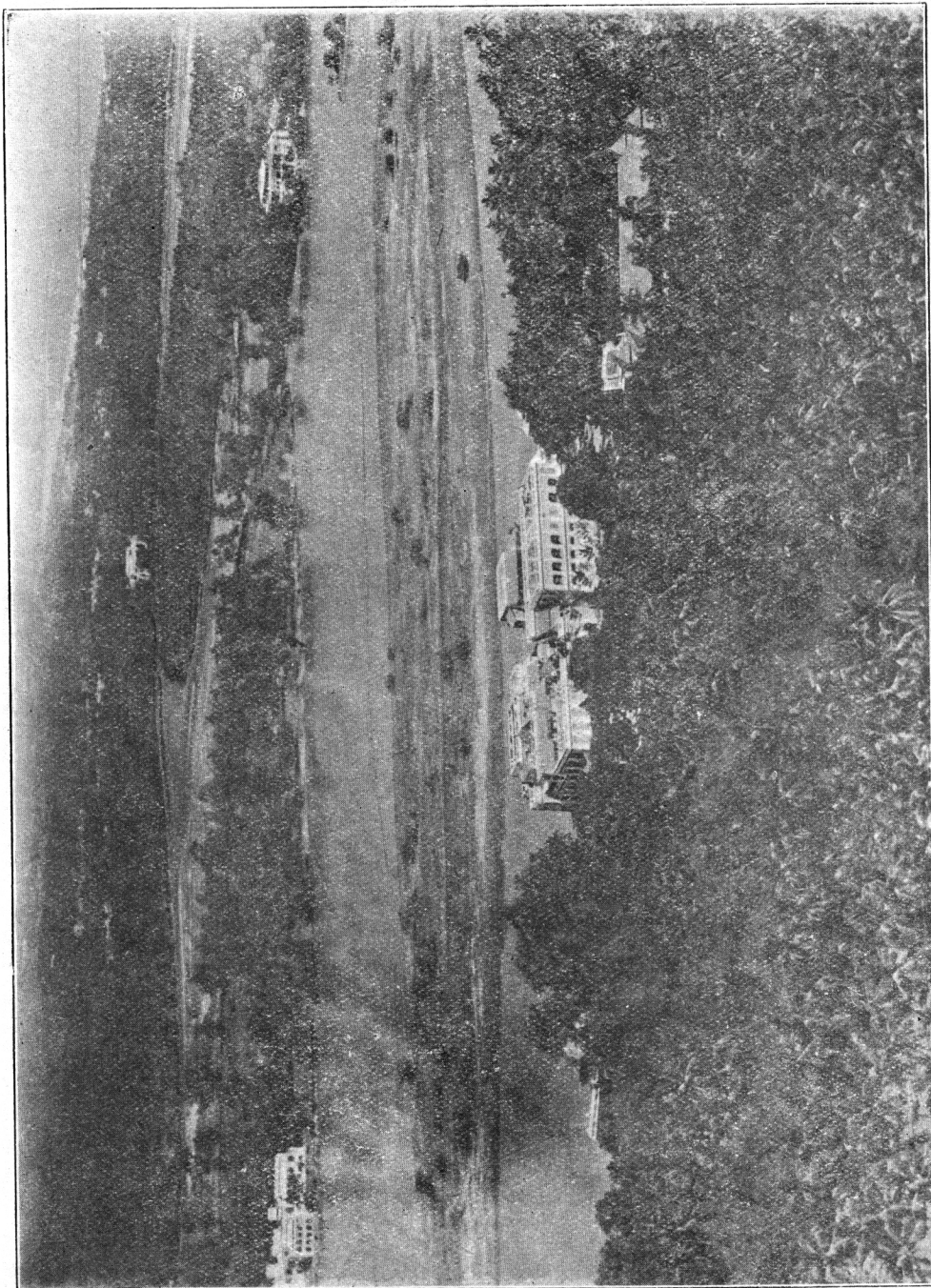


FIG. 226

AEROPLANE VIEW, FROM THE SOUTH, SHOWING MADRAS IN THE DISTANCE



FIG. 227

FIRST TRILITHON, AT ENTRANCE. ON BASE OF COLUMNS
"H. S. O." AND "H. P. B."

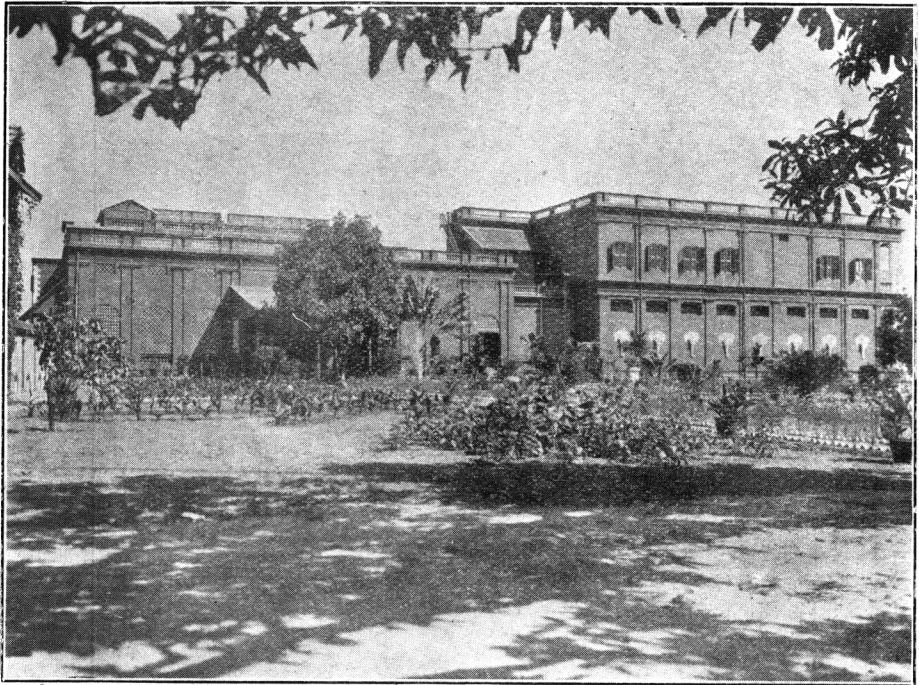


FIG. 228

HEADQUARTERS BUILDING—HALL AND ADYAR LIBRARY,
FROM THE SOUTH

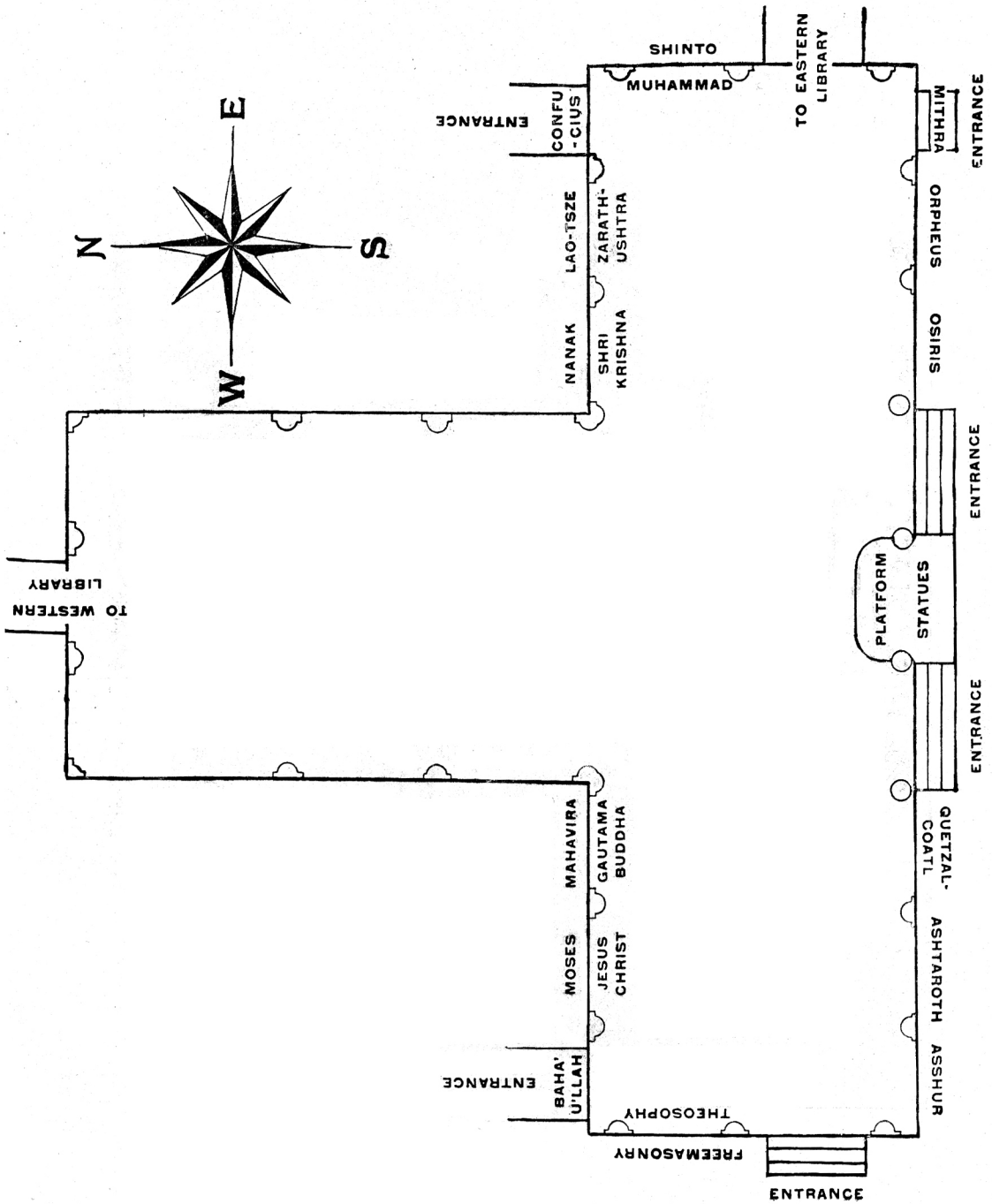


Fig. 229
GROUND PLAN OF HEADQUARTERS HALL, SHOWING POSITIONS OF THE SYMBOLS OF THE RELIGIONS

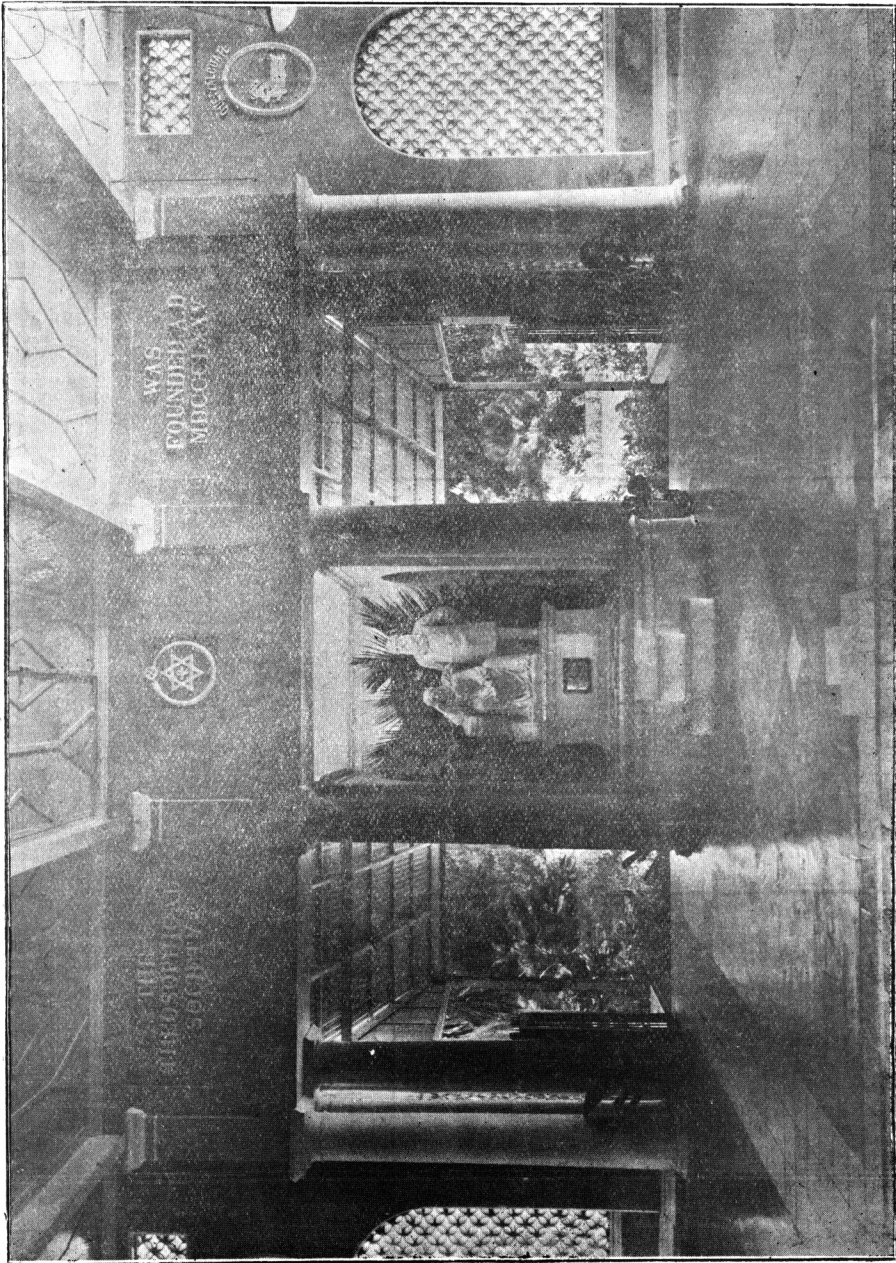


FIG. 280
HEADQUARTERS HALL.—PLATFORM



FIG. 231

HEADQUARTERS HALL, STATUES OF THE FOUNDERS

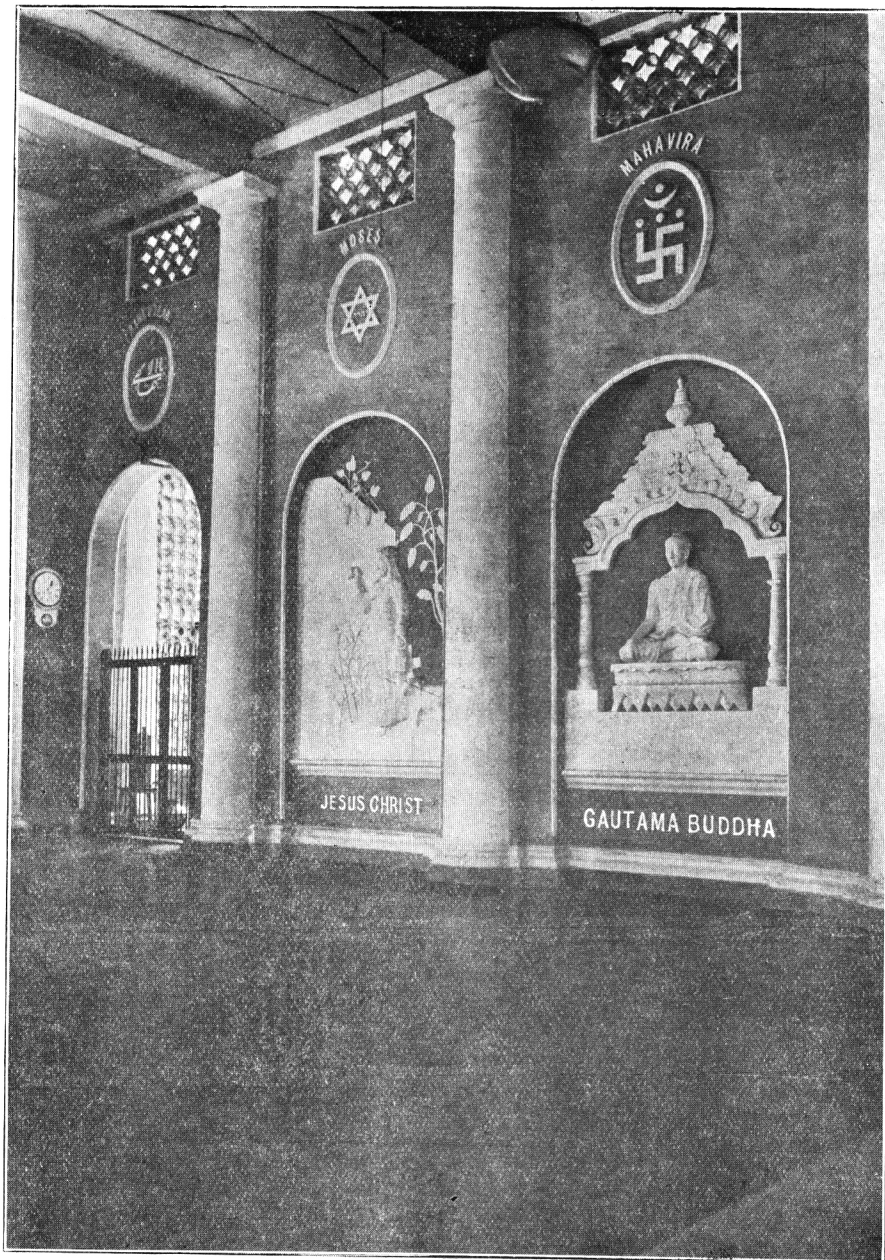


FIG. 232

HEADQUARTERS HALL, SYMBOLS OF THE LIVING RELIGIONS
Lower: Christianity, Buddhism. Upper: Bahaism, Judaism, Jainism.

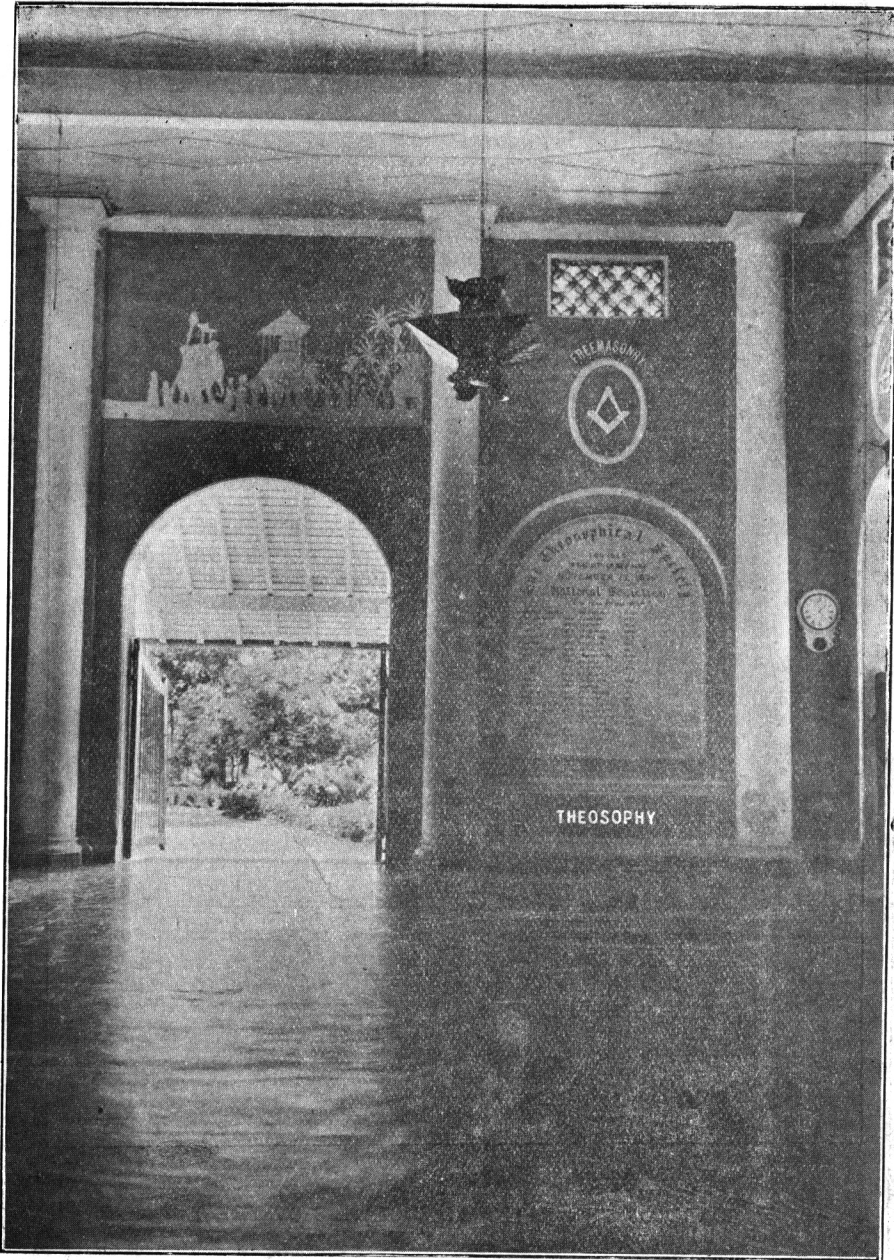


FIG. 233

HEADQUARTERS HALL, BOARD OF THE NATIONAL SOCIETIES T. S.
Lower: Theosophy. Upper: Freemasonry. Over archway: Procession in relief.

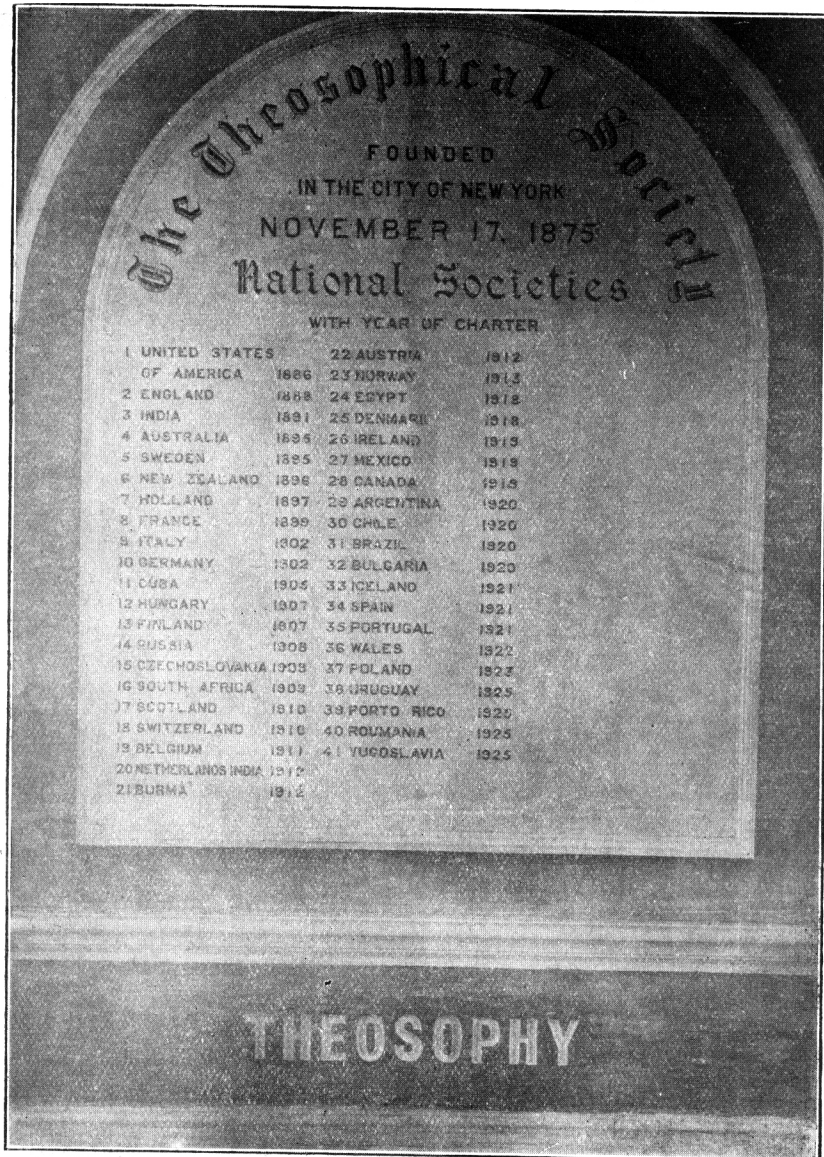


Fig. 234

BOARD OF THE NATIONAL SOCIETIES OF THE T. S.

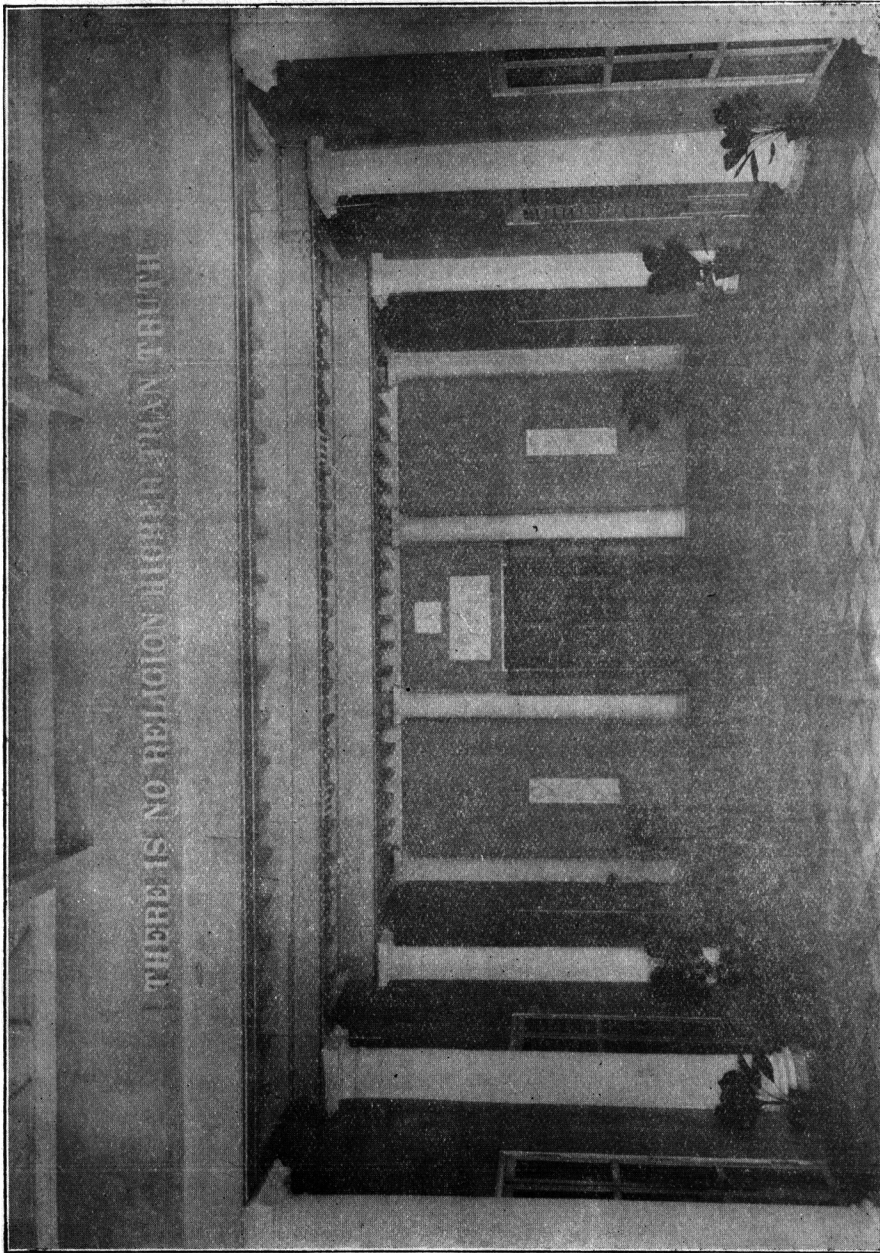


FIG. 285

HEADQUARTERS HALL, FROM THE PLATFORM, LOOKING NORTH



FIG. 236

HEADQUARTERS HALL, SYMBOLS OF THE LIVING RELIGIONS
Lower: Hinduism, Zoroastrianism. Upper: Sikhism, Taoism, Confucianism.



FIG. 237

HEADQUARTERS HALL, SYMBOLS OF THE LIVING RELIGIONS

Lower: Muhammadanism; Upper: Shintoism

NOTE: As it is against the tradition of Islam to make any image of the Prophet Muhammad, only Arabic inscriptions are placed in the alcove for Muhammadanism. The inscription at top reads: "There is no god but God"; that at bottom: "Muhammad is the Prophet of God." The ornamental scroll in the middle describes the Koran as follows: "This is a revelation from the Lord of the Worlds. Touch it not except with cleanness."

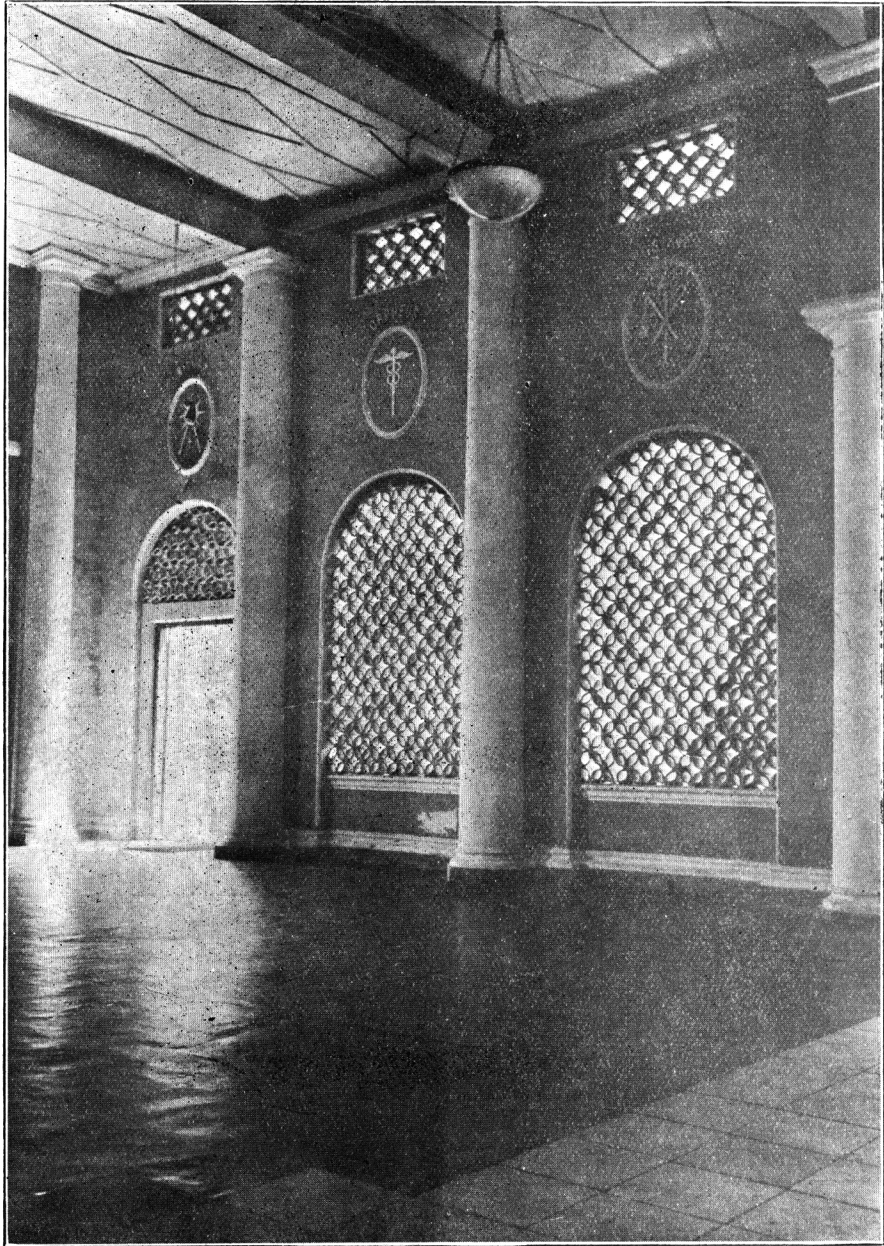


FIG. 238

HEADQUARTERS HALL, SYMBOLS OF EXTINGUISHED RELIGIONS

From the left, symbols of Mithra, Orpheus, Osiris

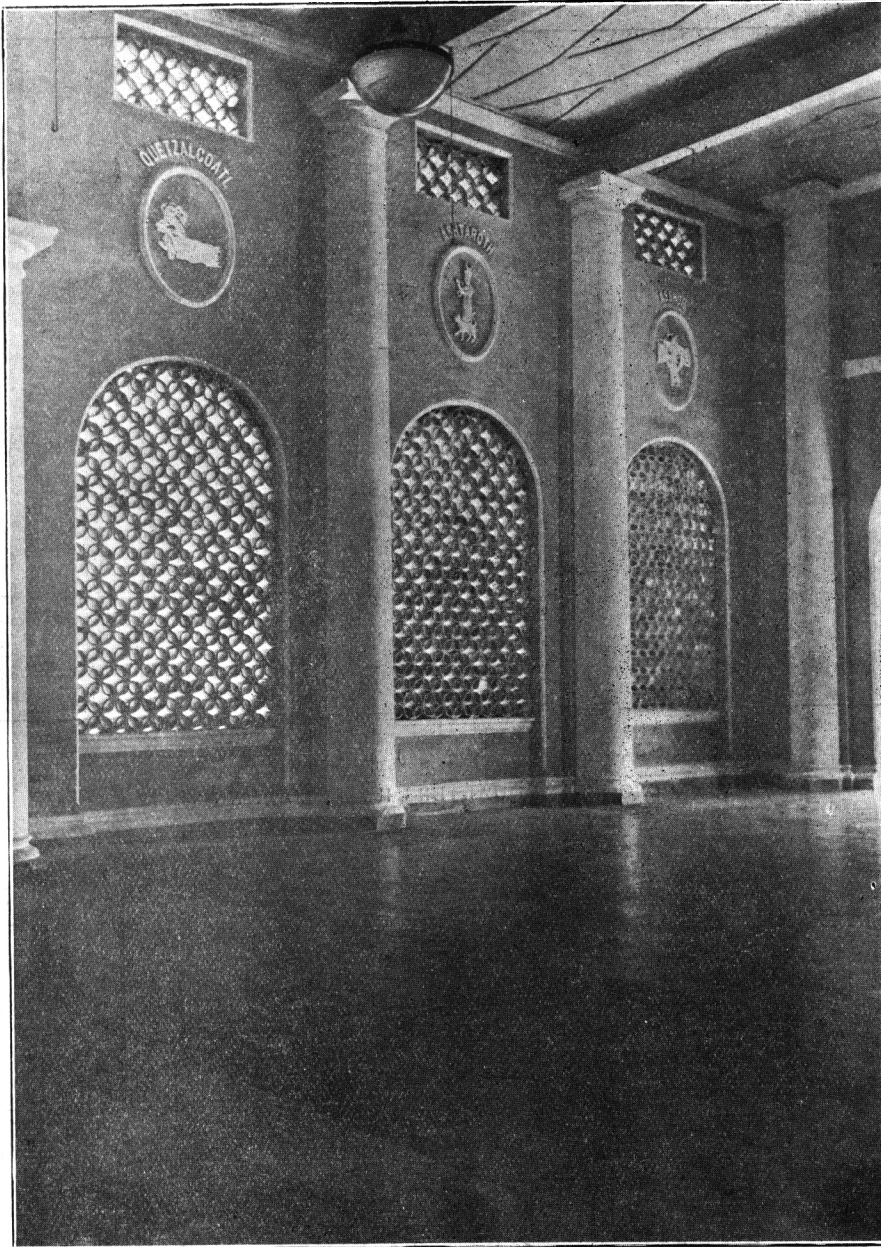


FIG 239

HEADQUARTERS HALL, SYMBOLS OF EXTINGUISHED RELIGIONS

From the left, symbols of Quetzalcoatl, Ashtaroth, Asshur,

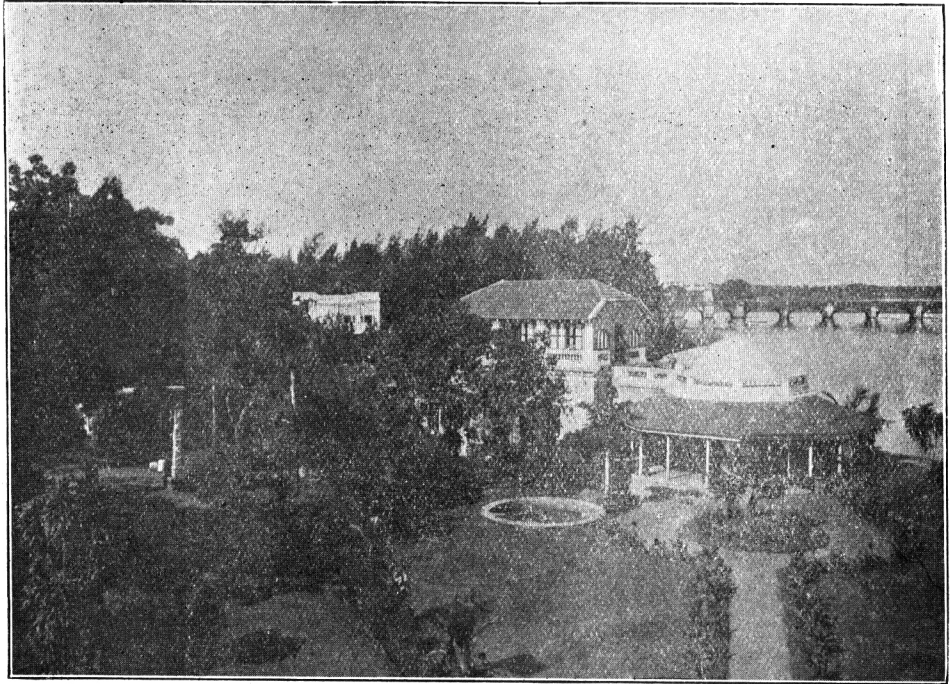


FIG. 240

VIEW FROM HEADQUARTERS HALL, LOOKING WEST

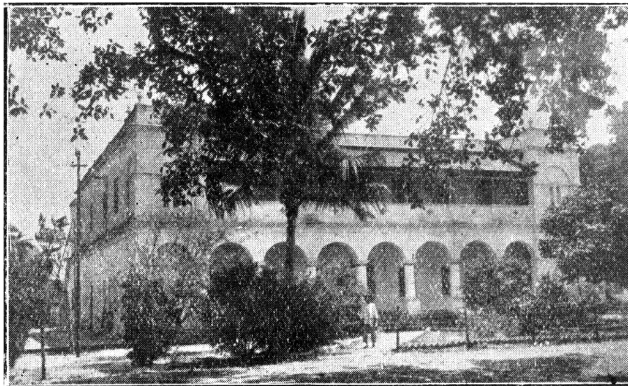


FIG. 241

"BHOJANASALA"—HINDU RESTAURANT

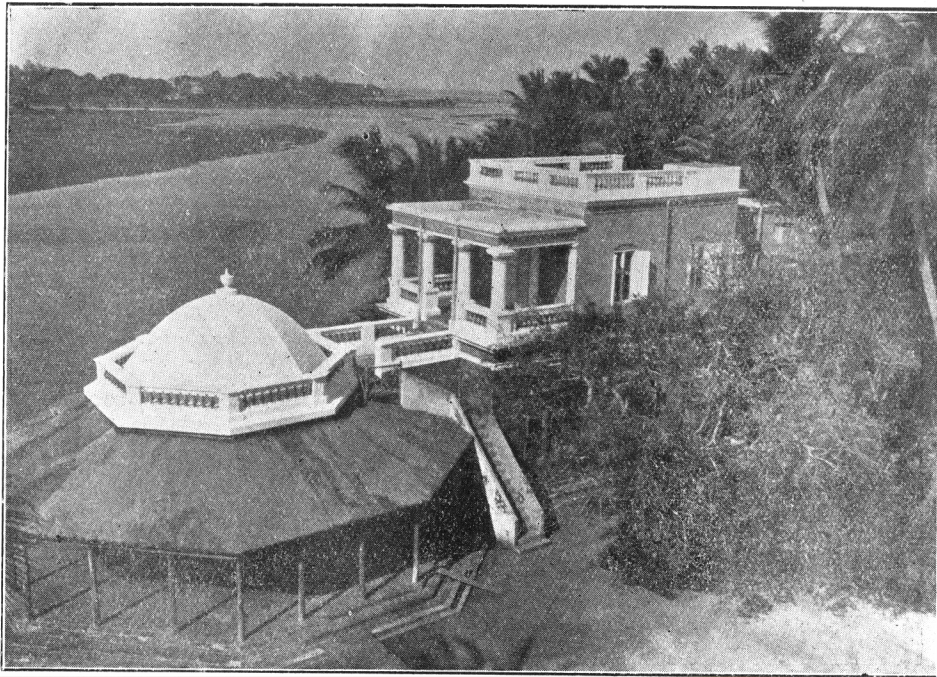


FIG. 242

VIEW FROM HEADQUARTERS BUILDINGS, LOOKING EAST TO THE SEA,
SHOWING EASTERN OCTAGONAL.

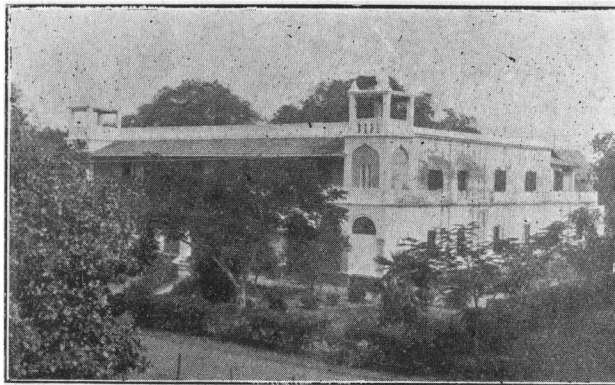


FIG. 243

“QUADRANGLE”—QUARTERS FOR INDIAN STUDENTS



FIG. 244

ADYAR LIBRARY—EASTERN SECTION

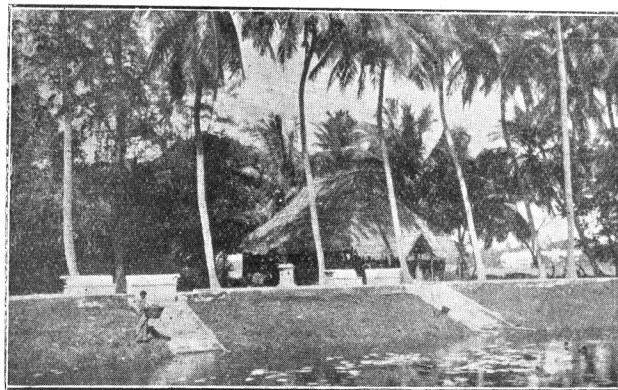


FIG. 245

BRAHMAVIDYA ASHRAMA—TEMPORARY
LECTURE HALL

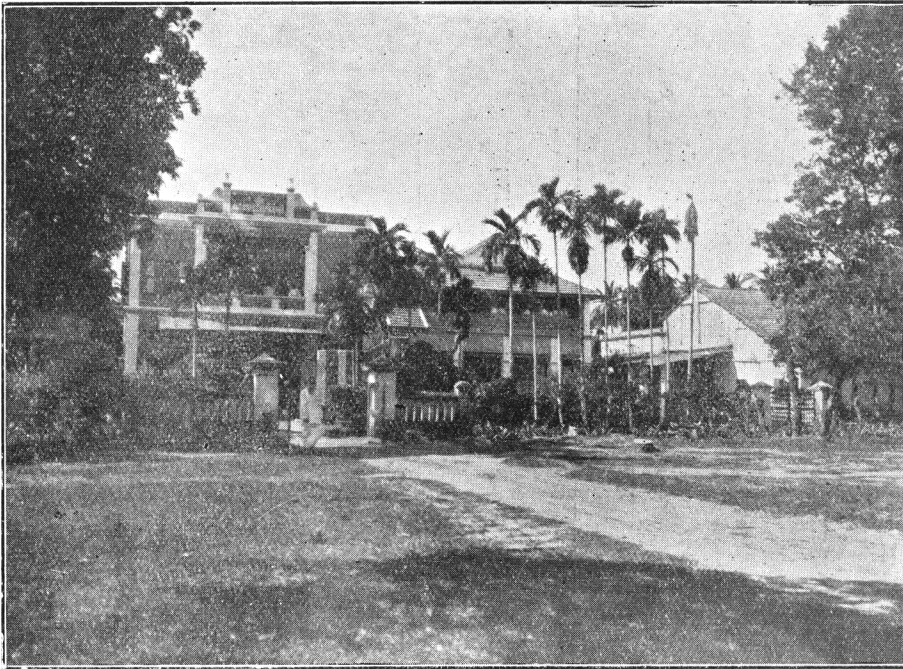


FIG. 246

VASANTA PRESS

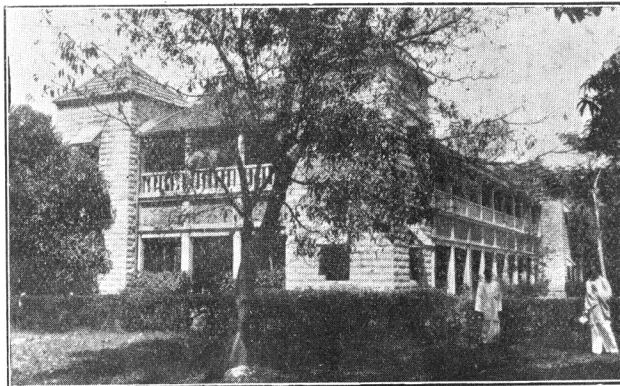


FIG. 247

THEOSOPHICAL PUBLISHING HOUSE

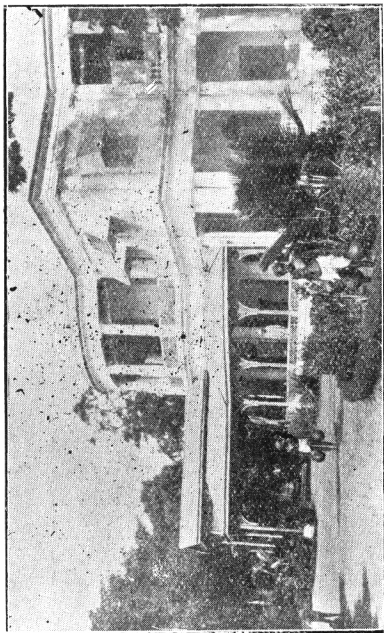


FIG. 249
BLAVATSKY GARDENS

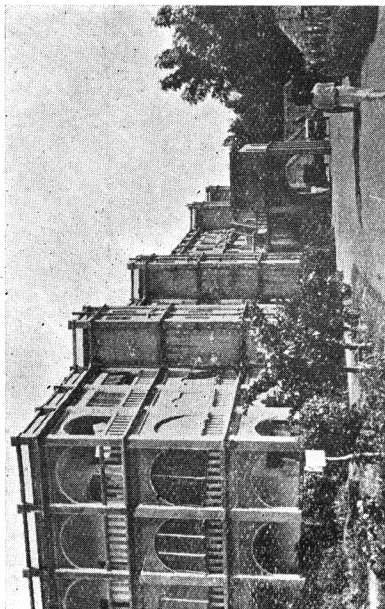


FIG. 251
LEADBEATER CHAMBERS, BACK VIEW

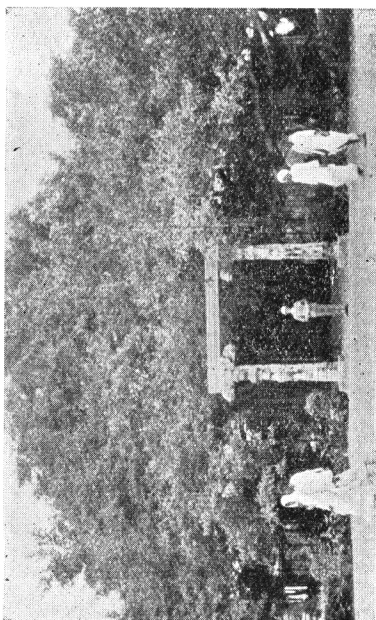


FIG. 248
THE BANYAN TREE

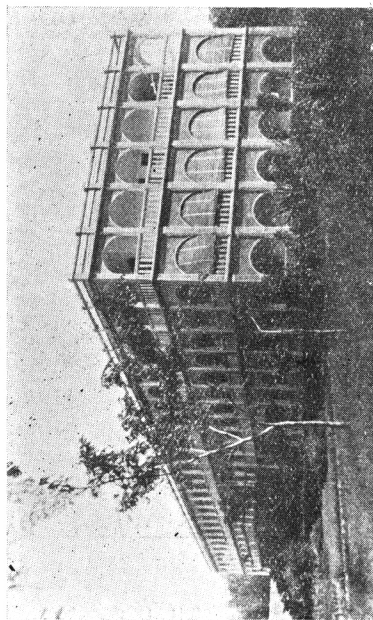


FIG. 250
LEADBEATER CHAMBERS—QUARTERS FOR
EUROPEAN STUDENTS, FRONT VIEW

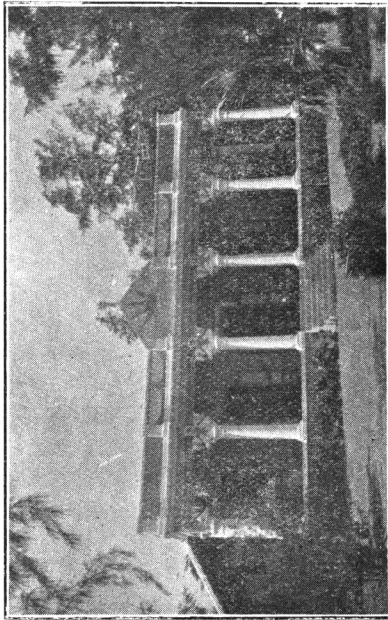


FIG. 253
ZOROASTRIAN QUARTERS

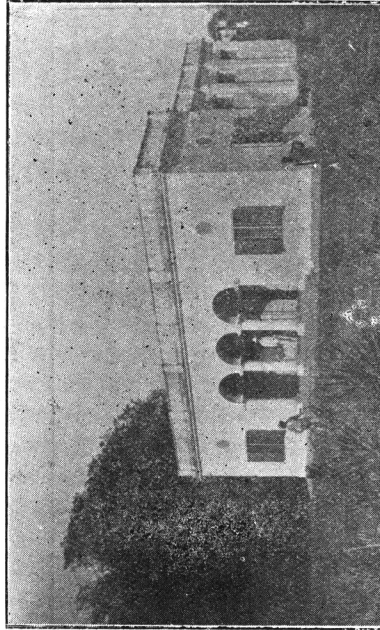


FIG. 255
MASONIC TEMPLE, "RISING SUN OF INDIA
LODGE", No. 107, UNIVERSAL CO-MASONRY

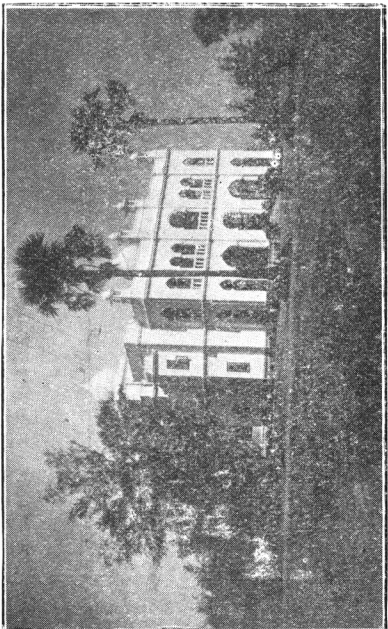


FIG. 252
"SEVASHRAMA"
Residence of the Brothers of Service

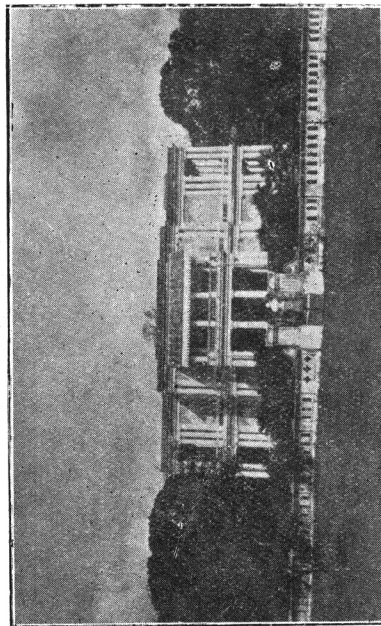


FIG. 254
OLCOTT GARDENS

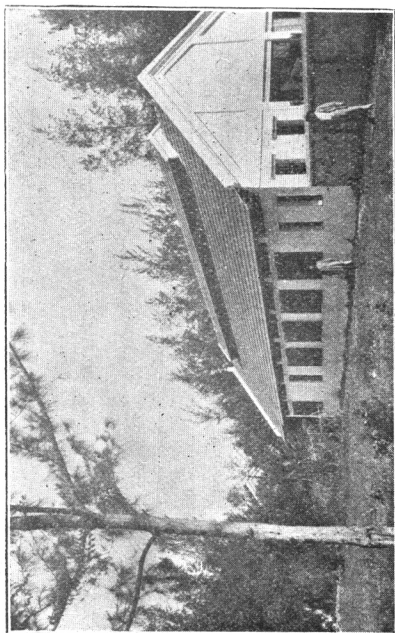


FIG. 257
POWER HOUSE—WORKSHOPS

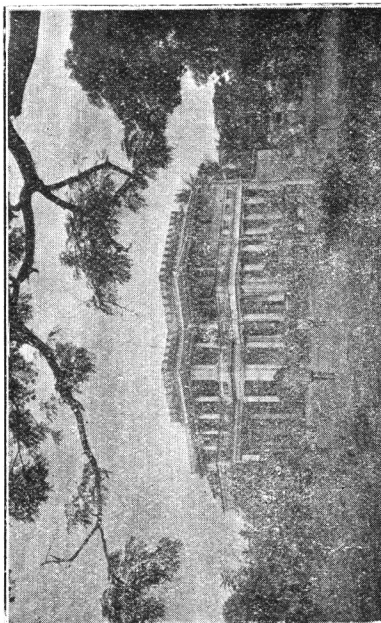


FIG. 259
DAMODAR GARDENS

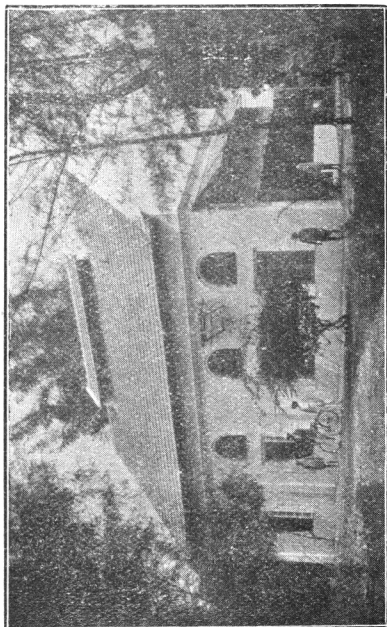


FIG. 256
POWER HOUSE—DYNAMOS AND BATTERY

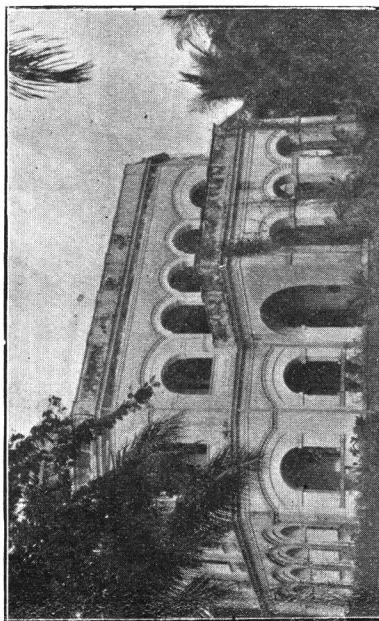
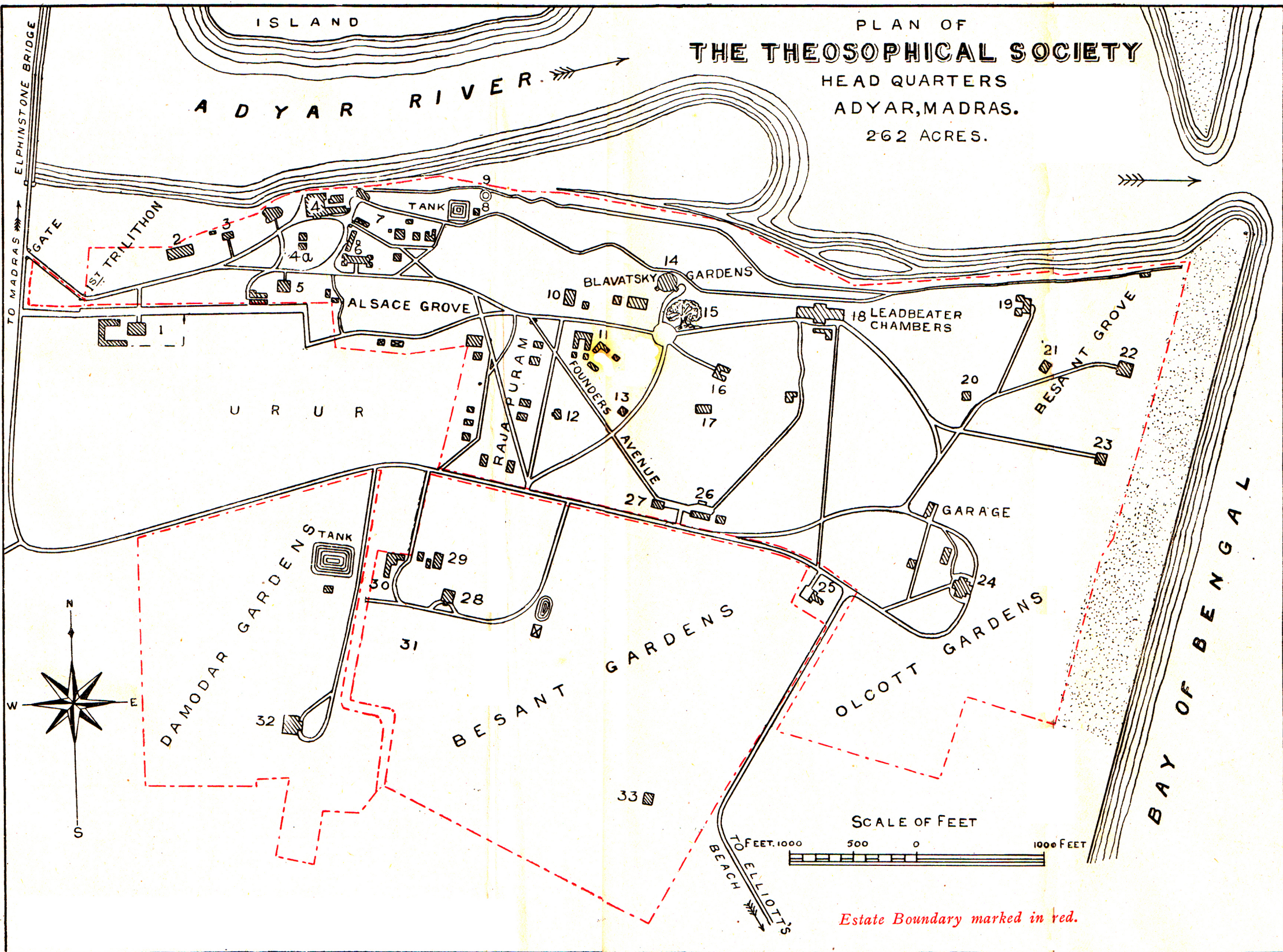


FIG. 258
BESANT GARDENS

PLAN OF
THE THEOSOPHICAL SOCIETY
 HEAD QUARTERS
 ADYAR, MADRAS.
 262 ACRES.



1. Vasanta Press
2. Site of Star Head-quarters
3. Arundale House
4. Headquarters Building & Adyar Library
- 4a. Record Office
5. Adyar Library Annex
6. Theosophical Publishing House
7. Vasanta Puram Houses
8. Buddhist Shrine
9. Olcott Memorial
10. Bhojanasala
11. Indian Quadrangle
12. Hindu Temple
13. Site of Zoroastrian Temple
14. Blavatsky Gardens
15. Banyan Tree
16. Wood Bungalow
17. Christian Church
18. Leadbeater Chambers
19. Sevashrama
20. Site of Jewish Synagogue
21. Muslim Mosque
22. Parsi Quarters
23. Bell Bungalow
24. Olcott Gardens
25. Masonic Temple
26. Power House Workshops
27. Power House Dynamos and Battery
28. Besant Gardens
29. Laundry
30. Dairy
31. Experimental Farm
32. Damodar Gardens
33. Cremation Ground

Estate Boundary marked in red.